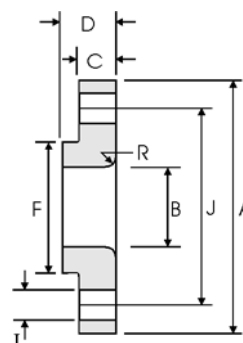




Lap Joint Flanges - ANSI B16.5



Class 90 lb

Nominal Pipe Size	Pipe	Flange Data					Lap	Hub	Drilling Data			Weight
		A	B	C	D	R	F	H	I	J		
	Outside Diameter	Overall Diameter	Inside Diameter	Flange Thickness min	Overall Length	Lap Radius	Hub Diameter	Number of Holes	Bolt Hole Diameter	Diameter of Circle of Holes	kg/ piece	
	in mm	in mm	in mm	in mm	in mm	in mm	in mm		in mm	in mm		
1/2	0.840	4.750	0.900	0.880	1.250	0.120	1.500	4	0.880	3.250	1.71	
	21.30	120.6	22.90	22.30	31.70	3.000	38.10		22.30	82.50		
3/4	1.050	5.120	1.110	1.000	1.380	0.120	1.750	4	0.880	3.500	2.30	
	26.70	130.0	28.20	25.40	35.00	3.000	44.40		22.30	88.90		
1	1.315	5.880	1.380	1.120	1.620	0.120	2.060	4	1.000	4.000	3.40	
	33.40	149.3	35.10	28.40	41.10	3.000	52.30		25.40	101.6		
1 1/4	1.660	6.250	1.720	1.120	1.620	0.190	2.500	4	1.000	4.380	3.85	
	42.20	158.7	43.70	28.40	41.10	4.800	63.50		25.40	111.2		
1 1/2	1.900	7.000	1.970	1.250	1.750	0.250	2.750	4	1.120	4.880	5.28	
	48.30	177.8	50.00	31.70	44.40	6.400	69.85		28.40	123.9		
2	2.375	8.500	2.460	1.500	2.250	0.310	4.120	8	1.000	6.500	9.78	
	60.30	215.9	62.50	38.10	57.15	7.900	104.6		25.40	165.1		
2 1/2	2.875	9.620	2.970	1.620	2.500	0.310	4.880	8	1.120	7.500	13.6	
	73.00	244.3	75.40	41.10	63.50	7.900	123.9		28.40	190.5		
3	3.500	9.500	3.600	1.500	2.120	0.380	5.000	8	1.000	7.500	11.3	
	88.90	241.3	91.40	38.10	53.80	9.700	127.0		25.40	190.5		
4	4.500	11.50	4.600	1.750	2.750	0.440	6.250	8	1.250	9.250	19.2	
	114.3	292.1	116.8	44.40	69.85	11.20	158.7		31.70	234.9		
5	5.563	13.75	5.690	2.000	3.120	0.440	7.500	8	1.380	11.00	31.20	
	141.3	349.2	114.5	50.80	79.25	11.20	190.5		35.00	279.4		
6	6.625	15.00	6.750	2.190	3.380	0.500	9.250	12	1.250	12.50	40.50	
	168.3	381.0	171.5	55.60	85.80	12.70	234.9		31.70	317.5		
8	8.625	18.50	8.750	2.500	4.500	0.500	11.75	12	1.500	15.50	71.5	
	219.1	469.9	222.3	63.50	114.3	12.70	298.4		38.10	393.7		
10	10.75	21.50	10.92	2.750	5.000	0.500	14.50	16	1.500	18.50	104	
	273.0	546.1	277.4	69.85	127.0	12.70	368.3		38.10	469.9		
12	12.75	24.00	12.92	3.120	5.620	0.500	16.50	20	1.500	21.00	139	
	323.8	609.6	328.2	79.25	142.7	12.70	419.1		38.10	533.4		
14	14.00	25.25	14.18	3.380	6.120	0.500	17.75	20	1.620	22.00	161	
	355.6	641.3	360.2	85.80	155.4	12.70	450.8		41.10	558.8		
16	16.00	27.75	16.19	3.500	6.500	0.500	20.00	20	1.750	24.25	194	
	406.4	704.8	411.2	88.90	165.1	12.70	508.0		44.40	615.9		
18	18.00	31.00	18.20	4.000	7.500	0.500	22.25	20	2.000	27.00	267	
	457.2	787.4	462.3	101.6	190.5	12.70	565.1		50.80	685.8		
20	20.00	33.75	20.25	4.250	8.250	0.500	24.50	20	2.120	29.50	334	
	508.0	857.2	514.4	107.9	209.5	12.70	622.3		53.80	749.3		
24	24.00	41.00	24.25	50.50	10.50	0.500	29.50	20	2.620	35.50	618	
	609.6	1041.4	616.0	139.7	266.7	12.70	749.3		66.55	901.7		

Notes

- Weights are based on manufacturer's data and are approximate.
- For tolerances see page 8-4.